

EndNote X8 Citation Manager What's New?



David Rathvon, MLS
Client Experience Program Coordinator

UTSouthwestern
Medical Center
Health Sciences Digital
Library & Learning Center

Health Sciences Digital Library and Learning Center

library.utsouthwestern.edu

UTSouthwestern
Medical Center

Health Sciences Digital Library
and Learning Center

[UTSW Home](#) [myUTSW](#) [UTSW Mail](#) [Moodle](#)

Search Library Website

[Home](#) [Quick Links](#) [Portals](#) [Services](#) [About](#) [Ask Us](#)

RESERVE A ROOM HERE!

Popular Links
Library Catalog
Ejournals A to Z
Interlibrary Loan (ILLiad)
EndNote
Grant Funding Resources
Institutional Repository
UT Southwestern Archives
AccessMedicine / AccessPharmacy
CINAHL Complete
ClinicalKey / ClinicalKey for Nursing
JoVE Sci Ed (Basic / Adv Biology)
Ovid MEDLINE / Embase
PubMed
Scopus
SciVal Funding
STAT!Ref / BoardVitals
UpToDate
VisualDX
Web of Science / JCR
[More](#)

Popular Ejournals
Cell
JAMA
J. Biol. Chem
JoVE
Nature
NEJM
PNAS
Science
[More](#)

Find Articles Find Books & Journals Search Archives & Repository

PubMed

MESH | PubMed Tutorial
Ovid MEDLINE (1946 - Present)

Ovid Portal | Ovid Tutorial
[Additional Info / Help](#)

EndNote X8 - Citation Manager
What's New!
Tuesday, March 21, 2017
D1.602, Noon - 1:00 p.m.
McDermott Plaza Lecture Hall
Effective Teacher Series
[Attend the upcoming lecture or get assistance from a Librarian](#)

HUB Click to CHAT!

How Do I...
Connect from off-campus
Connect to wireless network
Find a book or an ebook
Find an article
Get help with my topic
Recommend a journal or book
Request an article or a book (Interlibrary Loan)
Request Training
Reserve a Group Study Room/Clinical Workstation
[More](#)

New Resources
Evidence-Based Practice Portal **New**
Systematic Review Portal **New**

Library News
Library launches new Evidence-Based Practice (EBP) Portal
Coming in April - Key Class Series!
2017 Medical Student Research Forum posters now available online
The Sage Premier 2017 journals collection has arrived!
[More](#)

Follow us [f](#) [t](#) [p](#) [r](#) [y](#)

[Library Home](#) | [Directions & Hours](#) | [UTSW Home](#) | [My UTSW](#) | [Feedback](#) | [Ask Us](#)
5323 Harry Hines Blvd., Dallas, Texas 75390-9049 | 214-648-2001
(c) 2017. All rights reserved.

Presentation Outline

- ▶ What is EndNote?
- ▶ Basic Overview –
- ▶ EndNote X8 Upgrade Features –
- ▶ EndNote Online, Etc. -
- ▶ Sharing Your EndNote Library –

What is EndNote?

EndNote is a software program that works with Microsoft Word to automatically format in-text citations and end-of-paper reference lists with your chosen output style (APA, MLA, Chicago, etc.). EndNote can also be used as a personal database to gather and store citation records from different information sources. In addition, EndNote allows you to run searches via direct connection to a database (BIOSIS, PsycInfo, etc.)

- ▶ Collect references (bibliographic citation information) while you are searching and store them in your personal library.
- ▶ Manage your references in your library by storing them in groups and attaching PDFs of full-text articles.
- ▶ Automate the process of adding citations and references when you are writing a paper and create bibliographies in the referencing style of your choice.
- ▶ Synchronize your downloaded and online libraries and share and collaborate with up to 100 other people.
- ▶ Save time, be more organized, and let the software do the work of referencing for you!

EndNote: The Process

Create a Library



Import Your Citations



Customize Your Library



Incorporate into MS Word

What you can do with EndNote

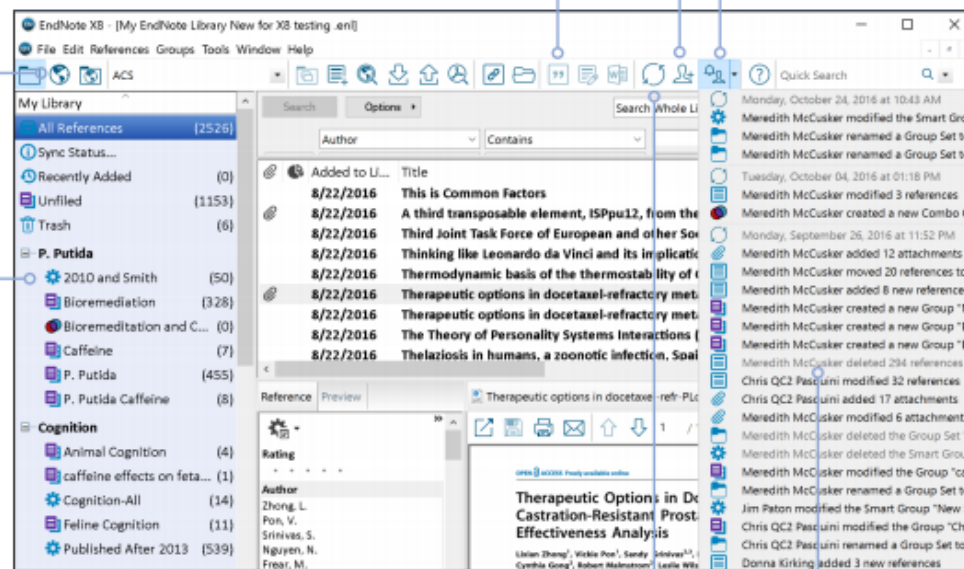
Search easily
Access thousands of online resources within EndNote.

Organize your references
Create groups and drag and drop your references into them, or create automatic smart groups and let EndNote take care of this for you.

Insert citations
Bring citations and references directly into Microsoft Word.

Track Activity
View a history of the changes made by your shared library colleagues via an activity feed.

Share your library
Collaborate with up to 100 other X7 and X8 users.

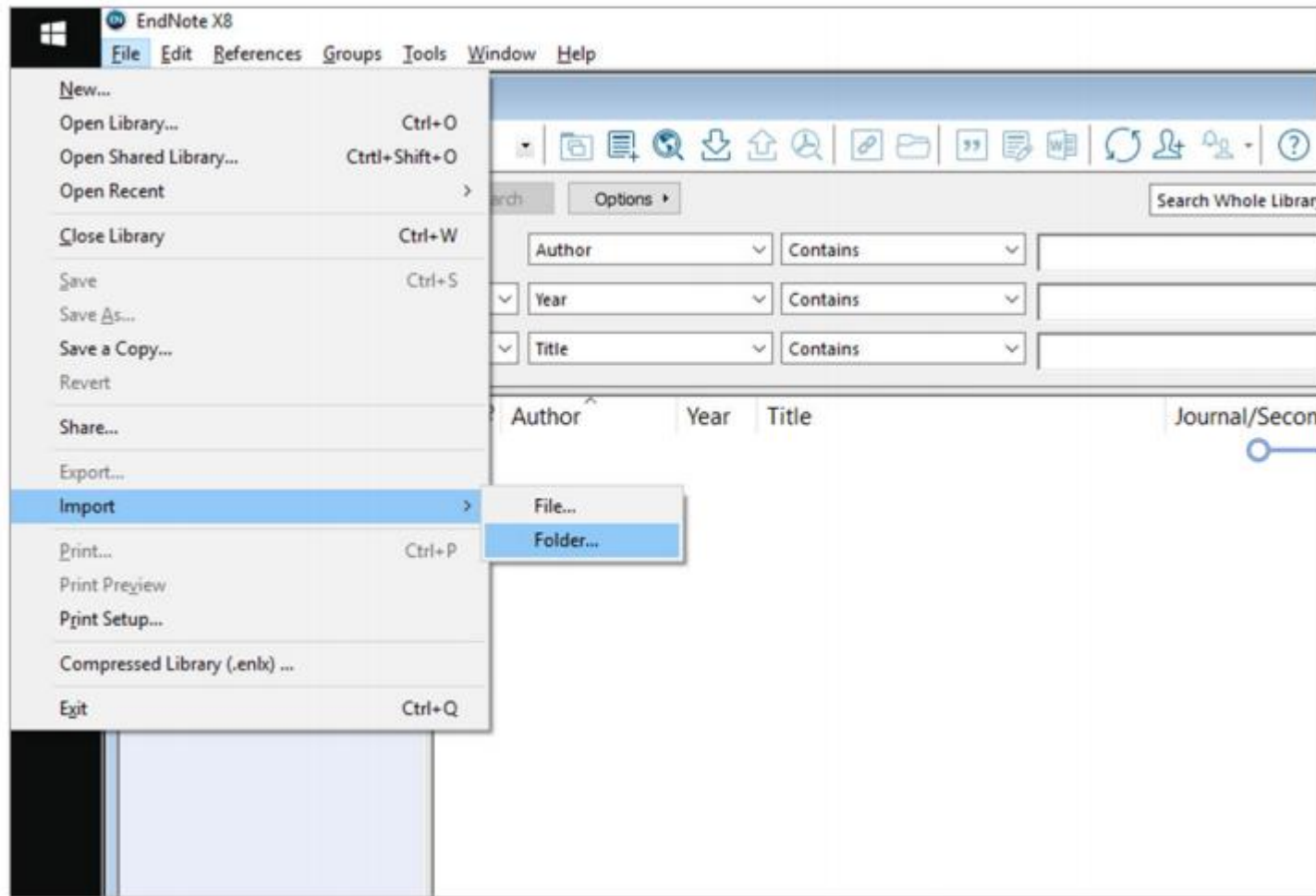


Sync your library
Sync across desktop, online, and iPad®.

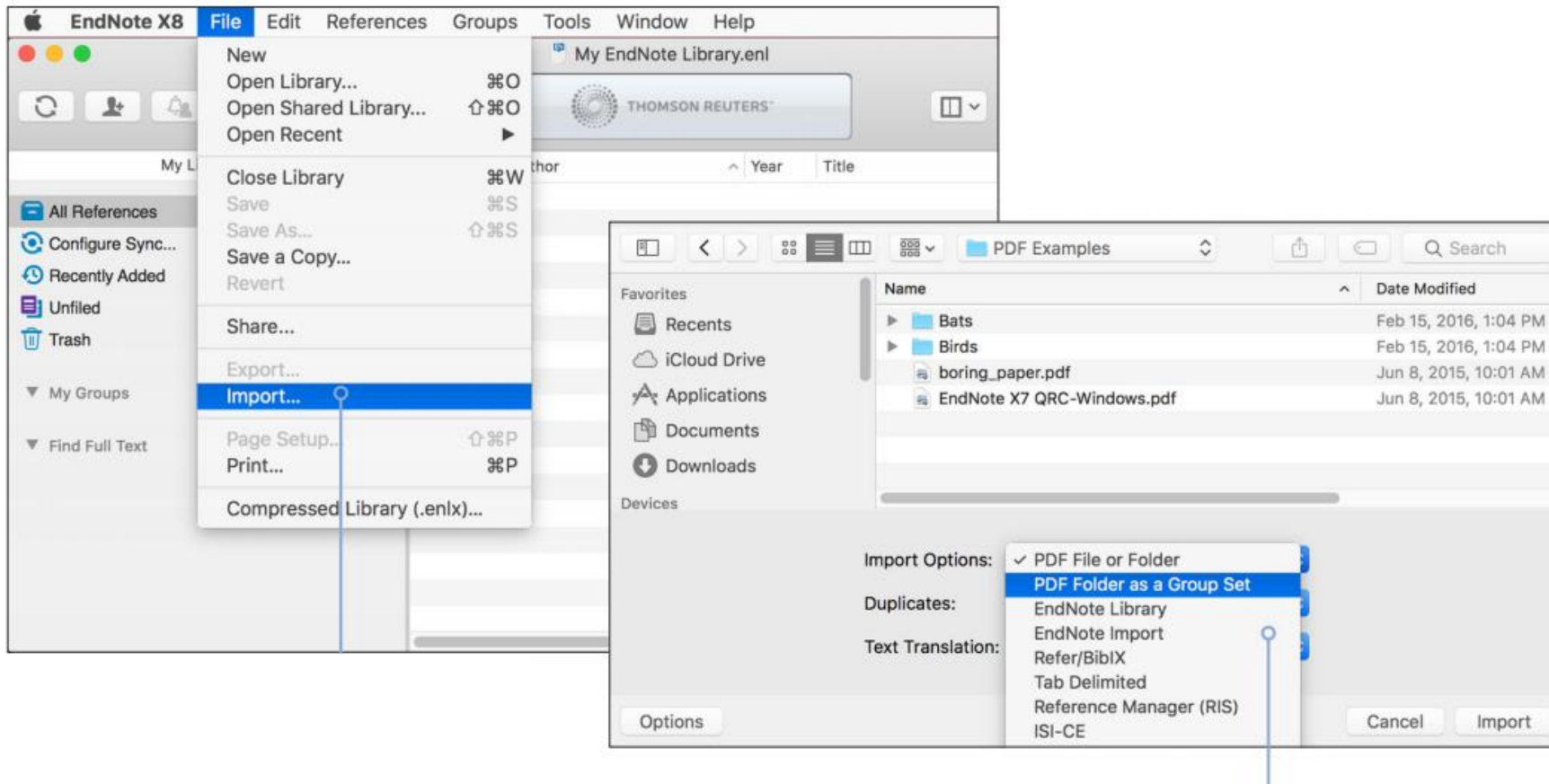
View and annotate your pdfs
Add sticky notes to your PDFs and search for them later. Use the built-in email functionality to quickly share a reference and its file attachments with others.

EndNote Menu Bar (PC)

Navigating Major Functions

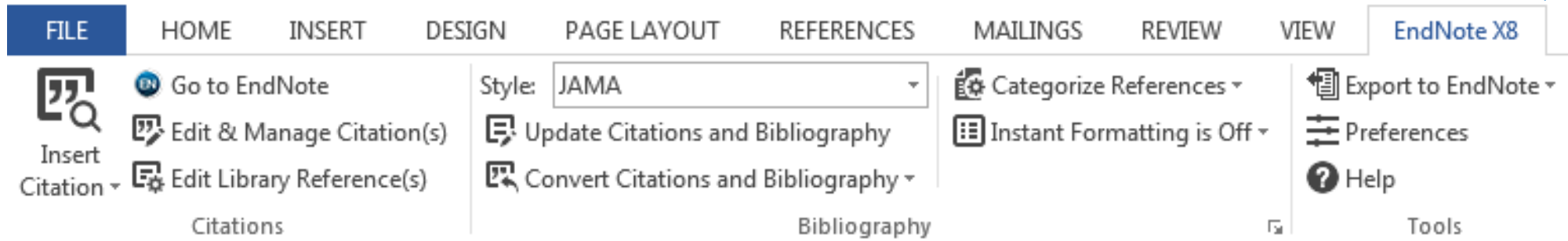


EndNote Menu Bar (Mac)



EndNote Toolbar

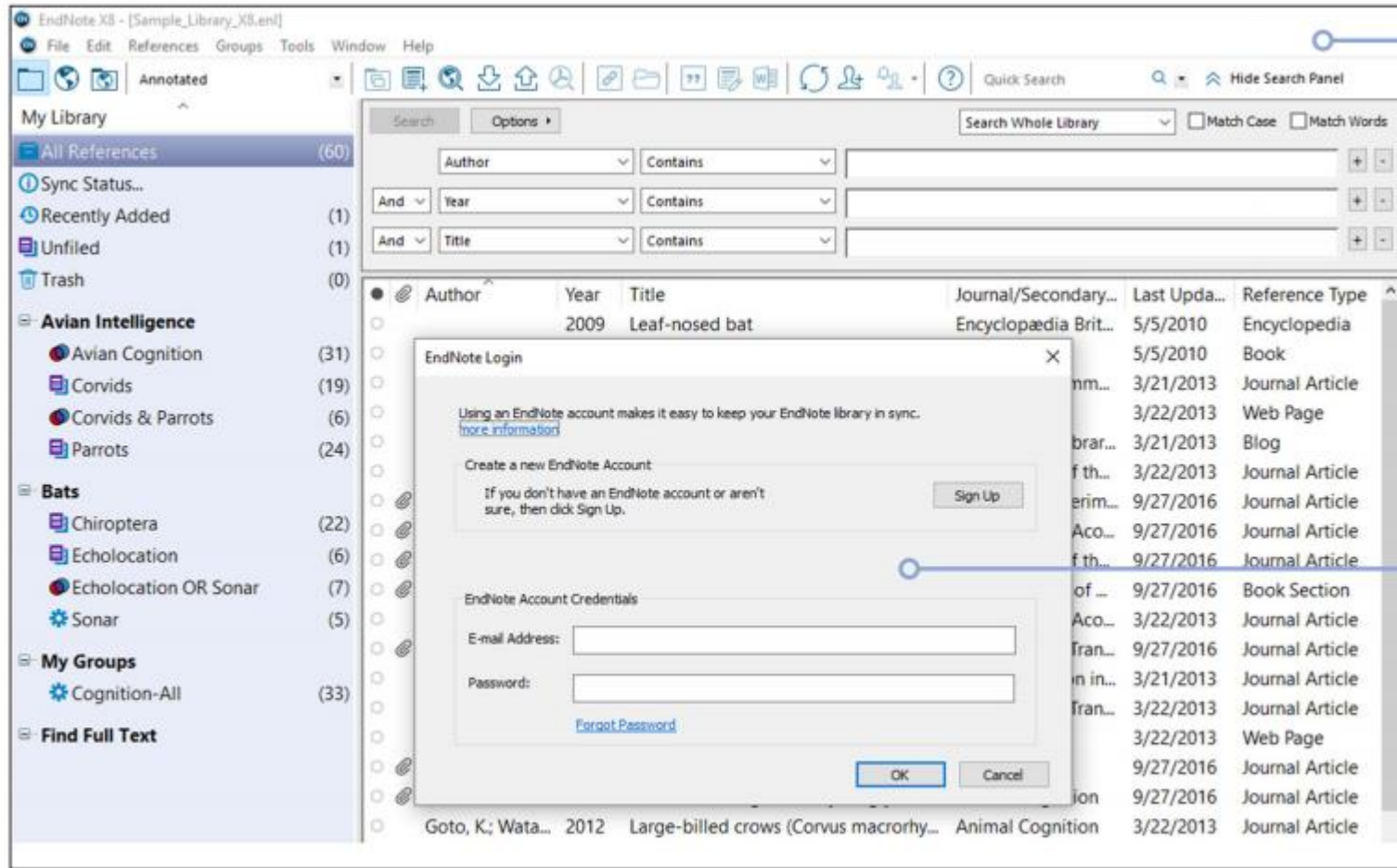
CITE WHILE YOU WRITE™ (CWYW)



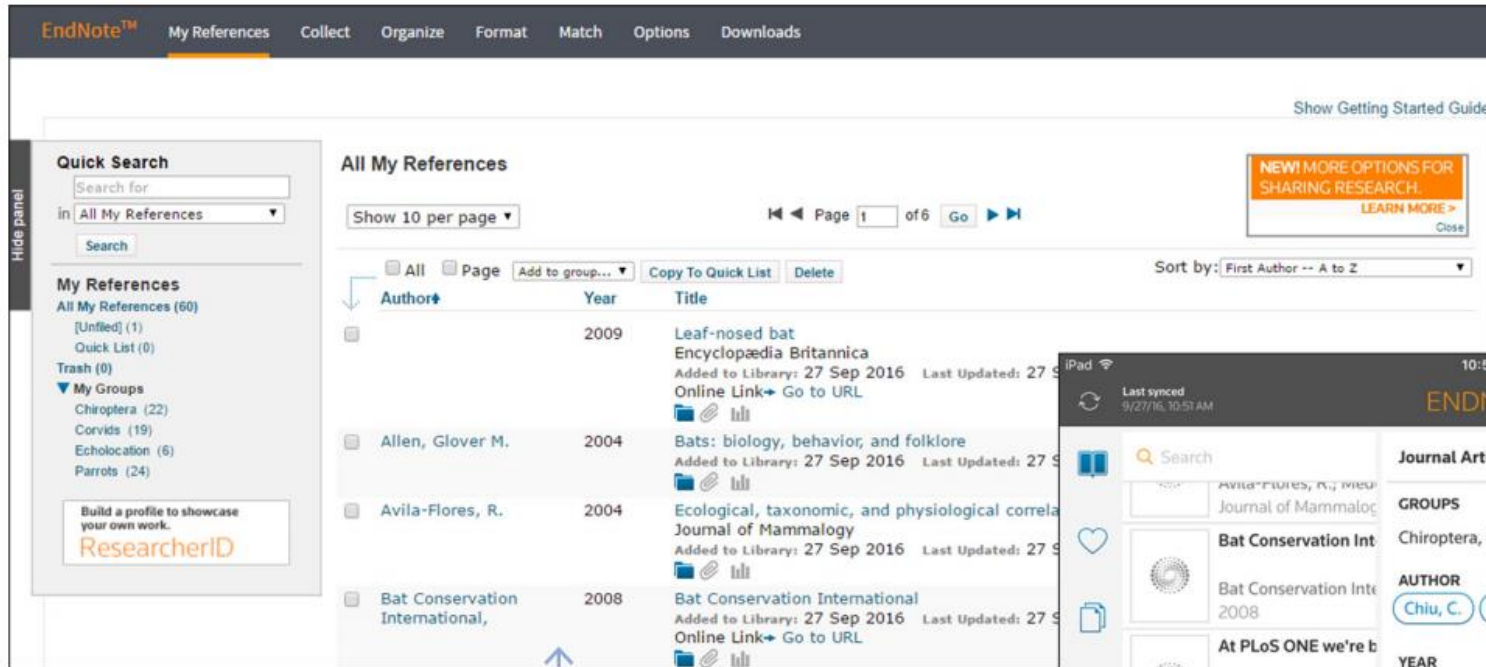
EndNote X8 Upgrade Features

- ▶ Share your library with up to 100 other EndNote desktop users on X7.2 or later; providing teams with immediate real time access to the same set of references, attachments, notes and annotations
- ▶ Access the Activity Feed to see what your colleagues are doing in the Shared Library and when new members join
- ▶ New, modern, easy to identify icons – identical across both Mac and Windows
- ▶ Updated workflows for finding reference updates
- ▶ Every X8 library includes a built in Recently Added group which can be customized, allowing users to pick up right where they left off in the research workflow
- ▶ Configure Sync option in the Groups pane to simplify desktop activation process
- ▶ Utilize unlimited file attachment storage in your online library
- ▶ Cite While You Write for Microsoft Word 2016

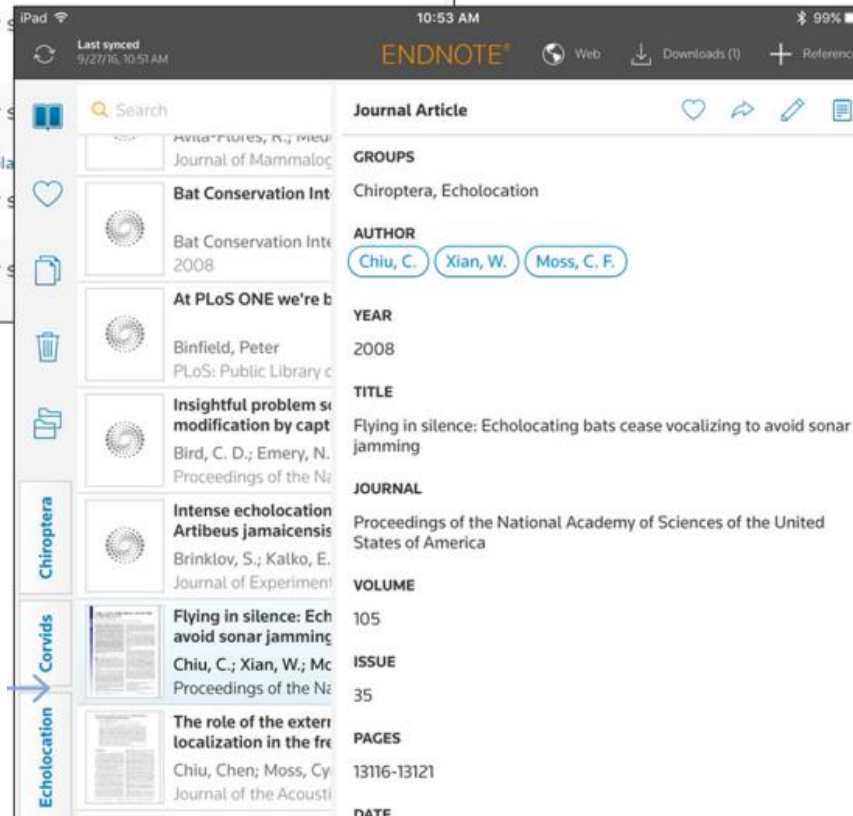
Sign up and sync anywhere



EndNote Online and iPad App*



* \$3.99 App purchase



Share Your Library

The screenshot displays the EndNote X8 application window. The 'File' menu is open, highlighting 'Open Shared Library...'. A 'Sharing' dialog box is active, showing a list of people to share with, including 'EndNote Anywhere'. The 'Invite' button is highlighted. A list of references is visible in the background, including 'Philosophical Transactions of the Royal Society B', 'PLOS ONE', 'Animal Cognition', 'Microscopy Research and Technology', '5th International Symposium on Library Journal', 'PLOS ONE', 'Animal Behaviour', 'Neuroreport', 'CBS Sunday Morning', 'Brain, Behavior and Cognition', 'Current Opinion in Neurobiology', 'New York State Journal of Medicine', 'The Alex studies: Cognitive and communication', and 'Rethinking syntax: A commentary on the syntax of the English language'.

Join Other Teams

Invite Colleagues

Manage Collaboration

Personalize Invitations

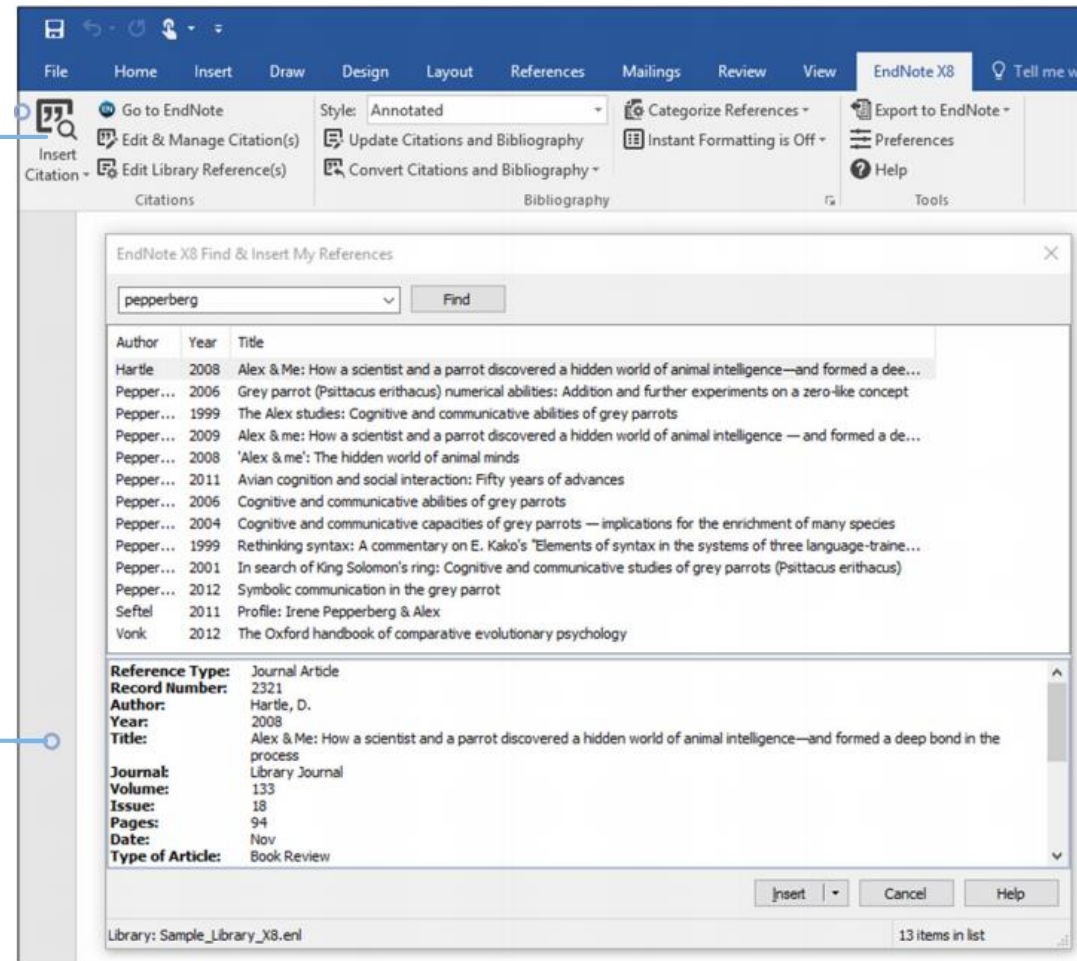
Track Invitations

Invite Collaborators

Source: Clarivate Analytics Quick Reference

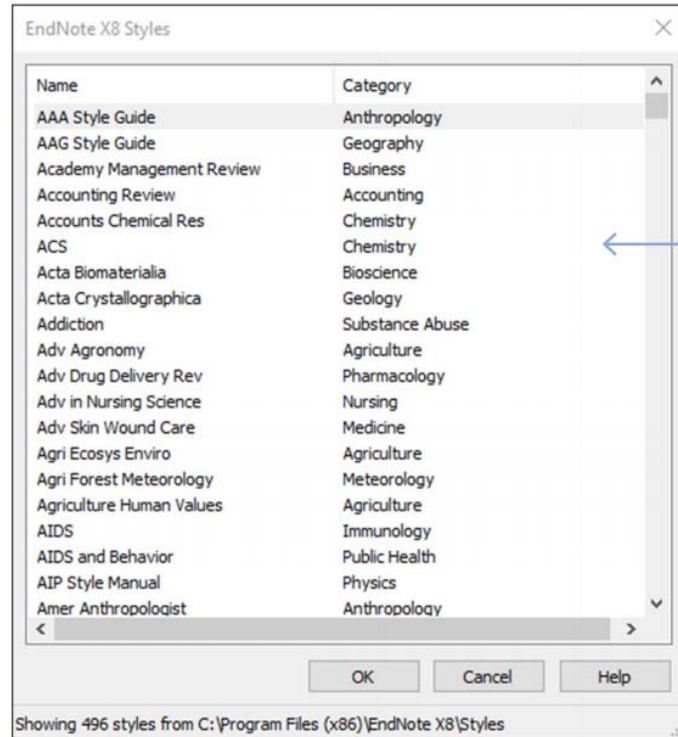
Cite References in Word

Open a Document
in Word

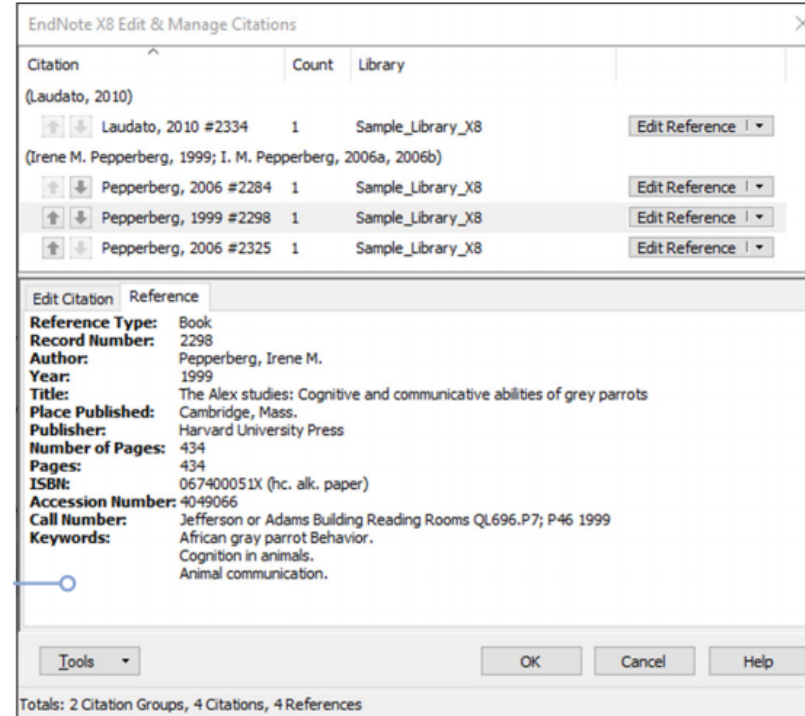


Find and Insert
References

Pick an Output Style



Edit and Manage Citations



EndNote Output Style Locator

EndNote Output Styles

EndNote offers more than 6,000 bibliographic styles

Download all styles

Submit a request for the creation of a new output style >

Use the Style Finder below to search for a style name and/or citation style and/or publisher.

Style or Journal Name

Contains

Citation Style

Is one of

Publisher

Contains

- Any -

Reset

Apply

Style or Journal Name

Citation Style

Discipline

Date

Ecohydrology &
Hydrobiology

Author-Year

2017-
03-10

Download

Use of Downloaded Files

EndNote output styles are provided solely for use by licensed owners of EndNote and with the EndNote product. By downloading EndNote Styles, Filters, Connections, Templates and Updates you automatically agree to the terms of use.

Installing Individual Styles

1. Download the style you want to install.
2. Double-click the style file. It should open in EndNote.
3. In EndNote, go to "File Menu" and choose "Save As". Replace the word "copy" with your style's name and click "Save".
4. Click on "File Menu" and choose "Close Style".

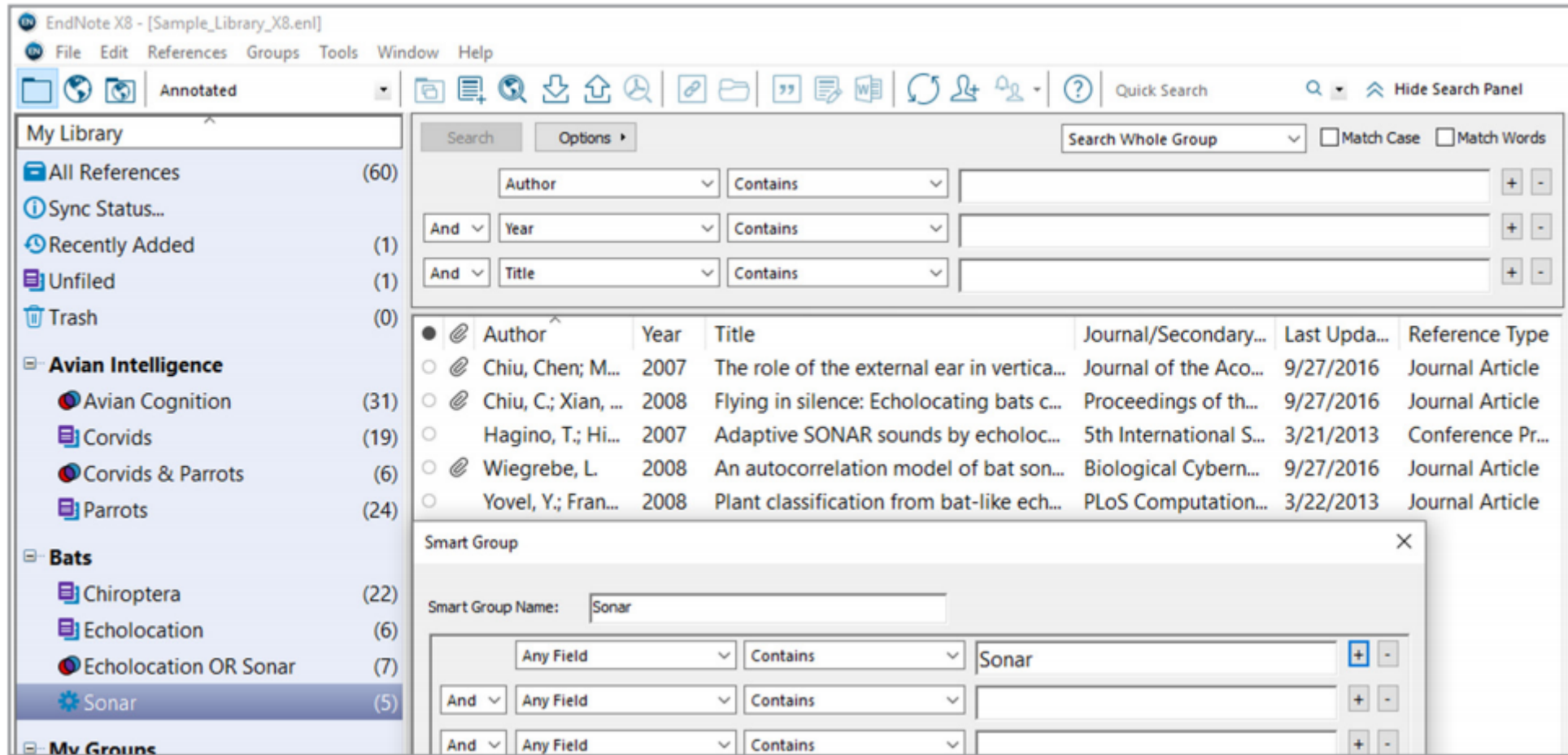
Have version X1 or prior? [Click here](#) for instructions.

Installing All Styles or Styles by Category

Mac OS:

1. In EndNote, go to "Menu" and choose "Customizer".
2. Place a check next to all of the

Create Groups



The screenshot displays the EndNote X8 software interface. On the left, the 'My Library' pane lists various reference groups, including 'Avian Intelligence' and 'Bats'. The 'Bats' group is expanded, showing sub-groups like 'Chiroptera', 'Echolocation', 'Echolocation OR Sonar', and 'Sonar'. The 'Sonar' group is selected, showing 5 references. The main window displays a search bar with the criteria 'Author' 'Contains' and 'Year' 'Contains'. The 'Smart Group' dialog box is open, showing the 'Sonar' group name and a search criteria table.

Field	Operator	Value
Any Field	Contains	Sonar
And	Any Field	
And	Any Field	

Smart & Combined Groups

The top screenshot shows the EndNote X8 interface with the 'Smart Group' search panel. The search criteria are set to 'Author', 'Year', and 'Title', all using the 'Contains' operator. The bottom screenshot shows the 'Create From Groups' dialog box, where a new group named 'Echolocation OR Sonar' is being created. The 'Include References in:' section shows the 'Sonar' and 'Echolocation' groups selected with the 'Or' operator.

Smart Group

Combined Group

Questions? Need More Training?

UTSouthwestern
Medical Center

Health Sciences Digital Library
and Learning Center

UTSW Home my UTSW UTSW Mail Moodle

Search Library Website Search

HomeQuick Links▼Portals▼Services▼About▼Ask Us

Personal/Group Training Request

The Library offers biomedical and other databases and resources in support of the clinical, education, and research activities of the campus. Experts are available to assist you in developing strategies to locate the information you need or enhance your skill set. Training is available for individuals as well as groups.

This service is available at no charge to faculty, staff, and students of The University of Texas Southwestern Medical Center, including the University Hospitals, as well as staff of Parkland Health and Hospital System, and Children's Medical Center.

Please indicate which training session(s) you would like to schedule below and identify the intended audience (personal or group).

Please [email us](#) if you experience any problems with this form. **As of 6/17/2015, we are currently experiencing an issue with this training form's confirmation page. If you are making a training request off campus, you may receive a blank confirmation page when you submit the form. Rest assured, we are still receiving your information.**

Topics

- ☐ 3D Printer Orientation and Resources
- ☐ Citation Verification: Complete Your Reference
- ☐ Designing Your Best Academic Poster
- ☐ EBSCO databases: Academic, Business, Consumer Health, ERIC and News resources
- ☐ Electronic Books and Journals: Getting to Full-Text
- ☐ Electronic Theses and Dissertations (ETDs) at UT Southwestern
- ☐ EndNote: Organizing your citations
- ☐ Evidence Based Medicine: Searching for Relevant Literature
- ☐ Grant Proposal Development; Navigating NIH and Other Federal Granting Agencies
- ☐ Grant Writing for NIH and Other Funding Agencies
- ☐ MEDLINE Searching (Ovid and/or PubMed)
- ☐ Multimedia Support (Camtasia, PowerPoint, and Video)
- ☐ Nursing and Allied Health Resources: Finding Patient Care Information
- ☐ Preparing Your Digital Images for Publication
- ☐ PsycINFO and other psychology resources
- ☐ Public Health Research and Practice Resources

* Required information

* Training Type? ☒ Personal ☐ Group (3 or more)

* First Name:

* Last Name:

* Status:

* Affiliation:

Department:

* Email:

Phone:

* Enter text shown below:

(Case sensitive)

Q^B R 7 J
C

Please click the Submit button only once to avoid sending duplicate registrations.

Submit

Reset

LibEndNote@utsouthwestern.edu
214-648-2001

EndNote Tech Support
1-800-336-4474, option 4
M-F 8 a.m. to 4 p.m.