

NEWSLETTER

THE UNIVERSITY OF TEXAS SOUTHWESTERN MEDICAL SCHOOL AT DALLAS

OCTOBER, 1972

IT'S NOW "MR. PRESIDENT"

Dr. Charles C. Sprague has been named president of The University of Texas Southwestern Medical School at Dallas.

The action was taken by the UT System Board of Regents at the same time the Board changed the titles of the chief administrative officers at UT San Antonio and Houston medical schools from dean to president.

Additional organizational changes will be up for consideration by the Board at its Oct. meeting. Head of the UT Medical Branch at Galveston already had the designation of president. Other than simply changing the title, the actions does not shift responsibility or create a vacancy.

CAMPUS TO GET FIRST PARKING STRUCTURE

A plan to construct The University of Texas System's first above-ground campus parking structure has been approved by the UT Board of Regents in an innovative step to relieve the critical shortage of parking space at Southwestern.

Authorized by the Regents during a meeting at UT Dallas earlier this month was a \$1.3 million, multi-level structure that will accommodate about about 600 cars. Dallas architects Beran & Shelmire were designated to design the building, to be located in the vicinity of existing Lot No. 4. Exact site will be decided as part of the design process.

Funds for the facility will come from a Southwestern Medical Foundation grant, from unexpended plant funds of the school and from parking fee revenue. The Regents appropriated \$70,000 initially from the foundation grant to cover fees and expenses involved in preparation of plans and specifications.

While no completion date has yet been determined, officials say the project will be expedited to the fullest extent possible. The project is designed to ease vehicular crowding and reduce the distance faculty and staff must travel to and from their cars, while at the same time preserving the natural beauty of undeveloped campus areas.

LARGEST FRESHMAN CLASS ENTERS UT SOUTHWESTERN

Officials of The University of Texas Southwestern Medical School are hoping you can't take the country out of the boy (or girl) as they shoe-horn the largest freshman medical class in history into the school. Of a total of 128 freshmen, there are 19 who are from Texas counties which have less than 50,000 population.

"Repeated studies show that students from rural areas are more likely to go back to rural areas to practice medicine and the admissions committee was well aware of this," said Dr. Bryan Williams, associate dean for student affairs.

And of the total of 471 students who will study medicine at the school this year, there are 63 from counties with less than 50,000 he added. There are quite a number more from what could be considered rural areas. While there is a general shortage of doctors in Texas, as compared to the national average, there are acute lacks in the more sparsely populated counties.

Numbers of minority students are up 85 per cent over last year. In all classes, there are 26, including eight blacks and 18 Mexican-Americans. This compares to 14 last year. In this year's freshman class there are three blacks and nine Mexican-Americans. There are 14 women in the incoming group and this representation is above the national average.

"Actually, we've always had more women medical students than the national average," said Dr. Williams, adding "Southwestern has always had an open admissions policy in this regard."

This year's 128 freshmen were chosen from a field of around 1,800 applicants. "They'll be taxing our facilities to the utmost," said Dr. Williams.

Southwestern is currently nearing the mid-point of a \$40 million construction program designed to enable the school to accept 200 medical students per class. It is contemplated that the first class of such size will be admitted in 1974--with the full quota of 800 medical students being reached in 1978. (In addition to medical students, Southwestern has 70 graduate students this year who are seeking advanced degrees in subjects like physiology, biochemistry, etc.)

The incoming class, which represents 40 colleges and universities, was greeted by President Charles C. Sprague who introduced several of the school's distinguished faculty to explain various aspects of a medical education.

They included Dr. Rupert Billingham, chairman of Cell Biology; Dr. Ron Estabrook, chairman of Biochemistry; Dr. Paul MacDonald, chairman of Obstetrics and Gynecology; and Dr. Donald Seldin, chairman of Internal Medicine.

After this introduction, the class boarded buses for a tour of Southern Methodist University, the Dallas Theater Center, museums and other points of interest.

VACATION SCHEDULE

The approved 1972-73 vacation and holiday schedule for Southwestern Medical School is:

September 4, 1972	Monday	Labor Day
November 23, 1972	Thursday	Thanksgiving Day
November 24, 1972	Friday	Thanksgiving Holiday
December 22, 1972	Friday	Christmas Holiday
December 25, 1972	Monday	Christmas Day
December 26, 1972	Tuesday	Christmas Holiday
December 27, 1972	Wednesday	Christmas Holiday
December 28, 1972	Thursday	Christmas Holiday
December 29, 1972	Friday	Christmas Holiday
January 1, 1973	Monday	New Year's Day
April 20, 1973	Friday	Good Friday
May 28, 1973	Monday	Memorial Day
July 4, 1973	Wednesday	Independence Day

Two additional State Legal Holidays not observed by The University will be added to the Statutory allowance to provide a total of twelve (12) working days annual leave for 1972-73, as has been the past practice. Also in accordance with the Appropriation Bill, University annual employees with fifteen (15) years State employment shall be entitled to seventeen (17) working days annual leave, and annual employees with twenty (20) years State employment shall be entitled to twenty-two (22) working days annual leave for 1972-73.

NEW COMPUTER-ASSISTED INFORMATION SYSTEM ANNOUNCED FOR FALL, '74 BY MRS. SUSAN MIZE

Implementation of a computer-assisted student information system has been announced for fall, 1974 by Mrs. Susan G. Mize, instructor in information systems and project director. The Student Affairs Management Information System, called SAMIS, was initiated at the suggestion of President Charles C. Sprague and Dr. Bryan Williams, Associate Dean of Student Affairs. It is currently operable in some areas of student affairs.

According to Mrs. Mize, SAMIS is made up of modular units designed to satisfy the informational and organizational needs of a total integrated system for the Office of Student Affairs and the administration of UTSWMS. Units presently under consideration for implementation in this open-ended system are admissions, master profile for matriculated students, pre-admission data for matriculated students, registration and enrollment, course inventory and scheduling, grades and student evaluation, student health, student financial aid, and alumni. Immediate attention is being focused on use of SAMIS in the areas of student admission.

A two-year \$34,531 grant from the National Fund for Medical Education will fund work in the area aimed at predicting student performance from information drawn on the experiences of students previously enrolled at UTSWMS. The knowledge gained from this study will hopefully be a valuable tool in assisting the Admissions Committee.

FRANCES WOOSLEY LOOKS FORWARD
TO HOBBIES, TRAVEL, AND LEISURE

Mrs. Frances Woosley, acting director of personnel at UTSWMS, has always been a tiny mite of a woman, but she cast a giant shadow during her years of service at the school.

Mrs. Woosley retired August 31 as acting head of personnel. She was with the school 21 years and with The University of Texas System 22 years. She was honored with a luncheon and a gift of luggage on her retirement.

During her years in personnel at UTSWMS she served on the Board of Directors of the Dallas Teachers Credit Union for eight years, was active in the national College and University Personnel Association for which she was recording secretary, and also served as secretary for the now-defunct Dallas Hospital Personnel Association. She also served on many of the national organization's committees.



From her early career days as student-then-secretary at Bonham (Tex.) high school to head of a large personnel department employing 11, her advancement was steady. During her eight-year stay as secretary-cashier at Bonham's Texas Power and Light Company, she met and married the local county-and-district attorney Louis Woosley.

"When the war came (World War II), I went with him until he left for the South Pacific. Then somebody said to me 'Lady, this boat is as far as you go!'"

After the war the Woosleys headed for Austin where Louis got started on his career dream--getting his law degree from The University of Texas at Austin. She put her school secretarial experience to advantage at Austin High School. Later she spent a year at The University herself as a secretary in the auditor's office.

The Woosleys moved to Dallas following Louis' graduation. Fortunately for the medical school, that was about the time that Southwestern became a part of The University of Texas System (1949), and her old boss from Austin came to Dallas as business manager here. She joined him at Southwestern as his assistant.

In 1954 the school established the personnel office. The next year Mrs. Woosley was hired to head it as its second director. She served in that capacity until after her husband's death in 1967. "After Louis died, I just wanted to ease off a while," she said. However, she agreed to stay on as assistant to the new director.

"In February of this year I decided it was about time for me to think of

Continued...

retiring, so I turned in my letter of resignation for this summer," continued the administrator. However, a new challenge was presented to her when her boss left. After some deliberation she decided that she would serve as acting director of personnel from May until her retirement in August if the school really needed her. And it did.

"The medical school has been a big part of my life," smiled Mrs. Woosley. "It's given me a great deal of satisfaction to work for an organization that does so many wonderful things for people."

Now Mrs. Woosley is looking forward to some leisure time. "I've has such a planned life," she said, "that I'm looking forward to relaxing and doing what I want to for a while."

SAHP GRADUATES 52 AT SECOND GRADUATION

Second annual commencement exercises for the School of Allied Health Professions of The University of Texas Southwestern Medical School were held Friday (Aug. 18) at 8 p.m. in the Weiss Educational Building Auditorium, 209 Oakwald, at Methodist Hospital of Dallas. At that time 52 candidates received certificates and degrees in four health fields.

The 52 degrees and certificates marked a significant increase over last year's 38, according to Dr. John W. Schermerhorn, dean of the School of Allied Health Professions. Certificate awardees are those students who enter the programs already holding bachelor's degrees from other institutions.



*Dr. Schermerhorn
Dean, SAHP*

The school opened in September, '70 with 57 students enrolled. Authorized by The University of Texas System Board of Regents to help relieve shortages of allied health professionals, the institution now has 22 full and many more part-time faculty. During the '71-'72 school year, 70 students attended classes.

This year's commencement address was given by Dr. Schermerhorn, who also presided. Conferring the degrees was Dr. Charles C. Sprague, president of The University of Texas Southwestern Medical School.



Dr. Donald A. Pool, chairman of the Department of Rehabilitation Science in the health professions school, served as parade marshal. Assistant marshal was Ms. Joan V. Fawns, UT allied health professions instructor. Invocation and benediction was given by the Rev. Mr. Ronald Littlejohn, director of student religious activities at Baylor University Medical Center.

STUDENT DRAKE STRICKEN, ASSISTANCE FUND STARTED

Glen B. Drake Jr., who would have been in the Junior Class at UTSWMS this year, wound up instead in Baylor University Medical Center's Intensive Care Unit in July. The 24-year-old student is a victim of Guillain-Barre Syndrome--a malady which paralyzed many of his reflex functions and made it necessary he be supported by respirator.

Ironically, Drake and the former Miss Jan Hancock has been married June 30 and it was on their honeymoon in Acapulco that he became ill with a virus which is thought to have led to appearance of the G-B syndrome.

Both young persons have been employed at Baylor: She is a dietary manager and he worked as an extern.

A fund to help defray the spiraling costs of his hospitalization has been set up at Lakewood Bank & Trust. Those wishing to assist should direct contributions to the Glen B. Drake Fund, Account No. 4513057, at that bank.

By the end of August, Drake had responded to treatment and was able to be off the respirator with the tracheotomy tube removed, friends of the family reported. He is the son of Mr. and Mrs. G.B. Drake and his wife is the daughter of Dr. and Mrs. Warren G. Hancock, all of Dallas.

ANESTHESIOLOGY EXHIBIT TAKES TOP HONORS AT AMA MEETING IN SAN FRANCISCO

An exhibit prepared under the direction of Assistant Professor James Montgomery, and Assistant Professor P.P. Raj, both in the Department of Anesthesiology, was declared the best exhibit in the anesthesiology section at the AMA convention in San Francisco this summer. The exhibit, "The Use of the Nerve Stimulator for the Localization of Nerves in Regional Anesthesia," describes a method by which nerves to be blocked can be located precisely by hypodermic needles attached to an electrical source.

ADDENDUM TO HONORS

In a recent NEWSLETTER we printed a list of faculty who had distinguished themselves by attaining presidencies of national societies or editorships of professional publications. It was one way to cross-section achievement, but it was by no means the best or most complete list of those who have reached key positions in medicine. So, herewith another grouping of important persons--those of our faculty who hold chairmanships of significant medical or health-related committees:

Frederick J. Bonte, M.D., Professor and Chairman of Radiology; American Roentgen Ray Society, Committee on Education and Research, Chairman, 1965-67.

John S. Chapman, M.D., Assistant Dean for Postgraduate Education and for Grants and Sponsored Research and Professor of Internal Medicine, Committees: 1. AMA Council on Environmental and Public Health, Chairman, March 1969-present; 2. Secretary's Advisory Committee on the UN

Continued...

Conference on the Human Environment, April 1971-present; 3. National Advisory Committee on Indian Health, Board of Directors since June, 1966.

W. Kemp Clark, M.D., Professor and Chairman of the Division of Neurosurgery; 1. Chairman, Resident's Paper Award Committee, Southern Neurosurgical Society, 1971-72; 2. Chairman, Program Committee, Neurosurgery Society of America, 1971-72; 3. Secretary, American Board of Neurosurgery, 1972-73.

David Daly, M.D., Scottish Rite Professor of Neurology; Committees: 1. American Academy of Neurology, Legislative Committee, Chairman, 1964-present; 2. American Neurological Association, Public Relations Committee, Chairman, 1970-present; 3. International League against Epilepsy, International Commission on the Pharmacology of Anti-epileptic Drugs, Chairman, 1970-present; 4. American Epilepsy Society, Lennox Lecturer Committee, Chairman, 1972-present; 5. American Epilepsy Society Legislative Committee, Chairman, 1972-present.

J. Wanzer Drane, Ph.D., Assistant Professor of Biophysics and Acting Chairman of the Division of Biomathematics and Biostatistics; Chairman, Committee on Information Exchange, Teachers of Statistics in the Health Sciences, American Statistical Association, 1972.

Ronald W. Estabrook, Ph.D., Virginia Lazenby O'Hara Professor and Chairman of Biochemistry; 1. Chairman of subcommittee on Biochemical Nomenclature of the International Union of Biochemistry, 1969-1971; 2. Chairman of the Basic Science Review Committee of Veteran's Administration, Washington, D.C., 1972-74.

Daniel W. Foster, M.D., Professor of Internal Medicine, Chairman, Metabolism Study Section, USPHS, National Institutes of Health, Washington, D.C., 1970-72.

Mary E. Gaulden, M.D., Emma Freeman Associate Professor of Radiology; Food and Drug Administration, Radiation Bio-Effects and Epidemiology Advisory Committee, 1972-76.

Adolph H. Giesecke, Jr., M.D., Professor of Anesthesiology; 1. Chairman, Committee for Audio Visual Program, The American Society of Anesthesiologists, 1968-72; 2. Chairman, Subpanel Anesthetics, Drug Interactions Project, American Pharmaceutical Association, 1971.

Martin R. Gluck, Ph.D., Associate Professor of Psychology; Committee on Visiting Practitioner Program, Division of Clinical Psychology, American Psychological Association, 1969-72.

Charles F. Gregory, M.D., W.B. Carrell Scottish Rite Professor and Chairman of the Division of Orthopedic Surgery; 1. Chairman of Examinations Committee, American Board of Orthopedic Surgery, 1963-67; 2. Chairman, Committee on Research, American Orthopedic Association; 3. Chairman, Membership Committee, Clinical Orthopedic Association.

Jack P. Gunter, M.D., Assistant Professor and Acting Chairman of Division of Otolaryngology; Co-chairman of the Constitution and Bylaws Committee, American Academy of Facial and Reconstructive Surgery, 1971-.

- L. Ruth Guy, M.D., Associate Professor of Pathology; Chairman, Committee on Technical Workshops of the American Association of Blood Banks, 1972.
- Marion T. Jenkins, M.D., Margaret Milam McDermott Professor and Chairman of Anesthesiology; Chairman, Section on Anesthesiology, American Medical Association, 1968-69.
- Morton F. Mason, M.D., Professor of Forensic Medicine and Toxicology, Chairman of Committee on Alcohol and Drugs, National Safety Council, 1966-68.
- Samuel M. McCann, M.D., Professor and Chairman of Physiology; 1. Chairman, Membership Committee, The Endocrine Society, 1970-71; 2. Chairman, Charter Membership Committee, The International Society of Neuroendocrinology, 1971-72.
- William F. Miller, M.D., Professor of Internal Medicine; 1. Chairman, Board of Medical Advisors, American Association of Inhalation Therapy, 1966-68; 2. Chairman, Committee on Respiratory Therapy, American College of Chest Physicians, 1969-present.
- Jere Mitchell, M.D., Professor of Internal Medicine and Physiology; Chairman of Council on Basic Sciences, American Heart Association, 1969-71.
- Charles F. Petty, M.D., Professor of Forensic Sciences and Pathology; Chairman, Council on Forensic Pathology, American Society of Clinical Pathologists, 1966-69, 1971-present.
- Alan K. Pierce, M.D., Professor of Internal Medicine; Chairman of Nominating Committee, Southern Society for Clinical Investigation, 1970.
- William A. Osburn, Associate Professor and Chairman of Medical Art and Visual Education, Chairman Ad hoc Committee for a Federated Society of Biomedical Communicators, joint committee with BPA and Health Science Communications Association.
- Jay P. Sanford, M.D., Professor of Internal Medicine; 1. Chairman, Allergy and Infectious Diseases Training Grant Committee, National Institute of Allergy and Infectious Diseases, NIH, 1971; 2. Chairman, Publications Committee, Central Society for Clinical Research, 1967.
- Donald W. Seldin, M.D., Professor and Chairman of Internal Medicine, Chairman of Scientific Advisory Board, National Kidney Foundation, 1969.
- G. Tom Shires, M.D., Professor and Chairman of Surgery; Chairman, Publications Committee, Society of University Surgeons, 1969-70.
- Marvin D. Siperstein, M.D., Professor of Internal Medicine; Chairman, Board of Scientific Counselors of the NIH, July 1969-June, 1973, Chairman, Jan. 1972.
- J. Donald Smiley, M.D., Professor of Internal Medicine, National Program Chairman, American Rheumatism Association, July 1969-June, 1970.

Continued...

W.J. Stenstrom, Assistant Professor of Medical Art and Visual Education and Ophthalmology, Association of Medical Illustrators, Chairman of 1. Program Planning Committee, 1969-70; 2. Council on Education, 1971-1972.

William Q. Sturner, M.D., Assistant Professor of Pathology; Chairman, Pathology and Biology Section, American Academy of Forensic Sciences, 1970.

S. Edward Sulkin, M.D., Professor of Microbiology; 1. Chairman, Microbiology Training Committee, NIH, General Medical Science, and 2. APHA, Chairman of Committee on Lab Infections and Accidents.

MULLINS GRANTED FELLOWSHIP

Dr. Charles B. Mullins, associate professor of internal medicine, has been granted fellowship in the American College of Cardiology, the national medical society for specialists in cardiovascular diseases.

PROMOTIONS AND APPOINTMENTS FOR PARKLAND SERVICE CHIEFS

New chiefs of service at Parkland include the following promotions and appointments:

Dr. Paul Peters--promoted to full professor and head of the division of urology in the department of surgery with parallel responsibility as chief of urology.

Dr. Jack P. Gunter--appointed associate professor and head of the division of otolaryngology in the department of surgery and chief of otolaryngology.

Dr. Phala A. Helm--acting chairman of the department of physical medicine and rehabilitation and instructor in the department. Also, chief of clinical service for physical medicine until a permanent chairman has been selected.

SPENCE HONORED BY SURGEONS

Dr. Harry Spence, clinical professor of urology at UTSWMS, was presented with a resolution to express "gratitude and indebtedness...for many contributions" to the North Texas Chapter of the American College of Surgeons recently.

The resolution, which was presented at the group's annual meeting in May, also cited Dr. Spence for helping to preserve the traditions of the chapter and the College and "insuring it continued growth in the future."

OSTERGAARD ON SAMA BOARD

Dan Ostergaard, junior medical student, has been elected to the 1972-73 Board of Trustees of the Student American Medical Association. The elec-

Continued...

tion was held at the SAMA annual meeting in Los Angeles, April 28-May 1.

AV/TV HIRES PRODUCER/DIRECTOR

Dr. Thomas Sweeney has joined Instructional Communications as full-time producer/director for the AV/TV section.

A native of Detroit, Dr. Sweeney has recently completed his doctorate in film education at Arizona State University, from which he also holds a master's degree in secondary education. His bachelor's is from Gonzaga University in Spokane, Washington.

Dr. Sweeney has a professional background which includes news, commercial, and educational TV work.

DR. HELEN DAVIS RECEIVES APPOINTMENT

Dr. Helen Davis, 1951 graduate of UTSWMS and former Parkland intern, has been named clinical associate professor of community medicine, College of Medicine and dentistry of New Jersey-Rutgers Medical School.

Dr. Davis did her residency at John Sealey Hospital and was instructor in pediatrics at The University of Texas Medical Branch at Galveston. She has been college physician and professor of health education at Douglass College, Rutgers University, since 1963.

SAHP BEGINS GRADUATE CLASSES IN REHABILITATION COUNSELING

Classes in this area's first graduate program in rehabilitation counseling began Aug. 31, according to Dr. Paul McCollum, program coordinator.

The course is the first graduate-level offering of the School of Allied Health Professions of The University of Texas Southwestern Medical School.

An unmet need exists for professional rehabilitation counselors and supervisors in state and local agencies and institutions, Dr. McCollum said, and the scope of rehabilitation services is rapidly expanding.

"Rehabilitation counselors have traditionally worked with individuals having physical disabilities," he explained. "But rehabilitation concepts now are being applied to the solving of mental and social problems, creating a need for more counselors possessing a variety of subspecialty skills."

The new graduate program is designed to offer "basic training" in rehabilitation of the disabled, he said, "while offering opportunities for interested students to specialize in the treatment of social problems, such as welfare, drug abuse, and the public offender." Emphasis in rehabilitation counseling is on helping individuals adjust, both physically and psychologically, to their disability and then find them jobs they can successfully perform, Dr. McCollum said.

STUDENT PAPERS COMMENDED

Papers presented by students at the 1972 fifth annual student research day were of professional caliber. So said guest lecturer Francois M. Abboud, M.D.

Dr. Abboud, whose appearance was sponsored by the Merck Sharp and Dohme postgraduate program, is professor of medicine at University Hospitals, the University of Iowa, at Iowa City.

According to Dr. Jere Mitchell, who introduced Dr. Abboud, the presentations were as follows:

Roger S. Knapp, II--"Cardiovascular effects of isoproterenol and norepinephrine in acute pulmonary hypertension."

J. Stanley Crie--"Investigation in isolated muscles of the inotropic effects of hyperosmolar agents."

John D. Bertrand--"Effects of heart rate on left ventricular dimensions in conscious dogs."

John Preskitt--"Systemic hypotension complicating mechanical ventilation: role of prostaglandin release."

Ron Merrill and Dwight Holden--"Responses of pulmonary vascular and bronchial smooth muscle to various biologically active substances."

John K. Campbell--"Noninvasive methods of measuring cardiac function during exercise."

Robert P. Burpo--"Noninvasive methods of measuring cardiac function during exercise."

Student research day is sponsored by the Pauline and Adolph Weinberger Laboratory for Cardiopulmonary Research, a division of Internal Medicine.

DR. PRICE JOINS SAHP

Dr. Frances Price, assistant professor of rehabilitation science, has joined the School of Allied Health Professions faculty, according to Dr. Donald A. Pool, chairman of the Department of Rehabilitation Science.

Dr. Price has worked with the Veterans Administration, the Texas Rehabilitation Agency, and the Georgia Rehabilitation Center in the area of physical therapy.

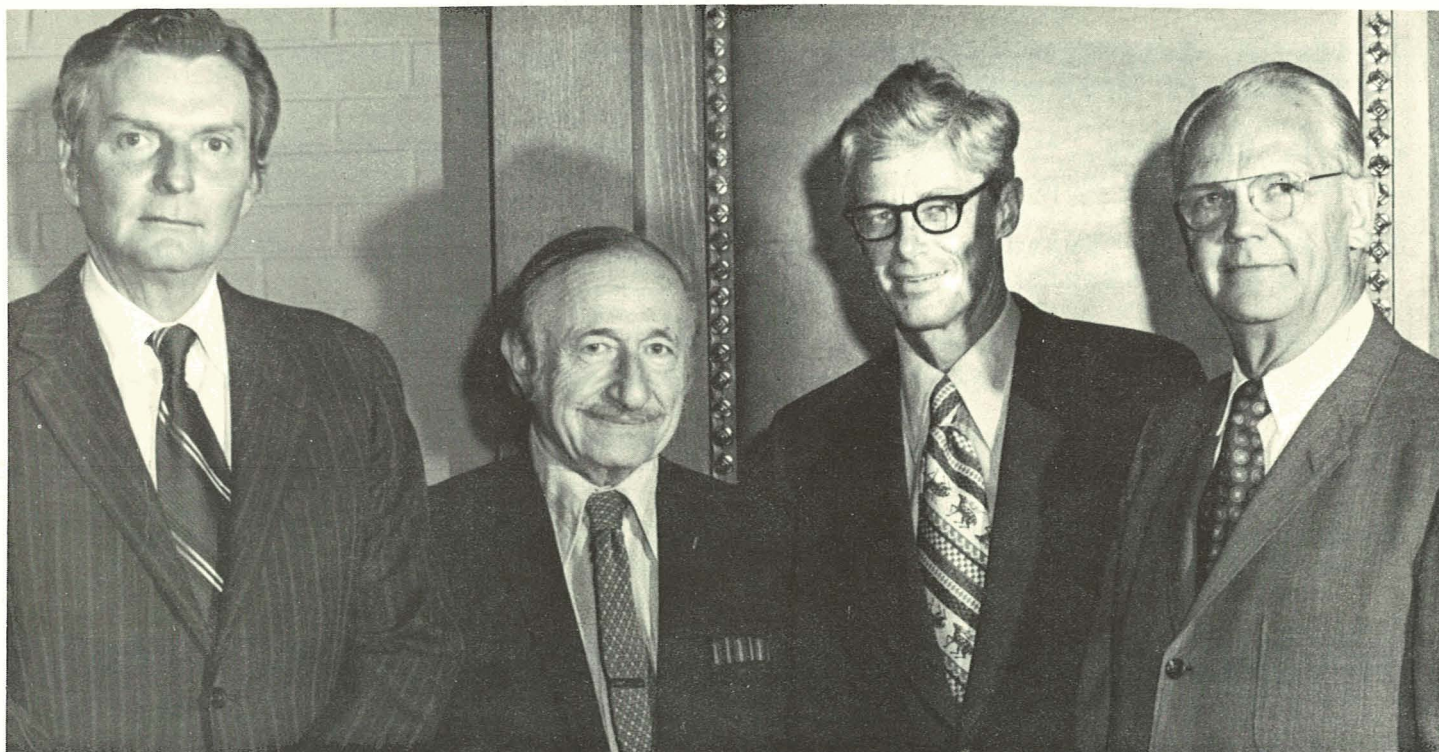
Her degrees are from the University of Georgia. In 1965, Dr. Price received a bachelor of science degree in psychology. The next year she earned a master's degree in rehabilitation counseling, and she recently was granted a Ph.D. in counseling psychology.

A mother of four children and a grandmother to four, Dr. Price lives with her husband and 16-year-old daughter at 5423 Peterson Lane in Dallas.

LUNCHEON HONORS GROLLMAN

A luncheon in honor of the retirement of Dr. Arthur Grollman was held Sept. 1 at the Chaparral Club. He has been a member of the faculty at Southwestern since 1944.

Dr. Grollman was honored with the presentation of a kymograph by Dr. Charles A. LeMaistre, Chancellor of The University of Texas System. Speaking about their associations over the years with Dr. Grollman were President Charles C. Sprague; Dr. Morris Fogleman, former professor of surgery at UTSWMS; Dr. Ernest Muirhead, former professor and head of pathology at the medical school; Millard Heath; and Jack Vaughan. Dr. John Vanatta was in charge of presentation arrangements.



Jack Vaughan Dr. Grollman Dr. LeMaistre Regent Dan Williams

Dr. Grollman is author of many books and papers during his long career as a scientist. He is also well known for discovering a way to measure cardio output in man. Among his other pioneering accomplishments are instituting a means of treating urimea and his work in the field of hypertension.

A native of Maryland, he was trained as physician and scientist at Johns Hopkins University at Baltimore. He has served as professor of medicine, professor of pharmacology, chairman of the department of physiology, pharmacology and experimental medicine.

Since 1967 he has been professor of experimental medicine in pathology.

NEW TEACHER TO TEACH TEACHERS

John Hedl, Jr., has announced the appointment of Ms. Kay Davis to work in the new teacher training program at the School of Allied Health Professions. Dr. Hedl is director of the program.

A graduate of The University of Texas at Austin with a B.A. in English and an M.E. in educational psychology, she is currently a candidate for a Ph.D. in educational psychology at the Austin campus.

Ms. Davis has taught for three years in the Austin public schools on the secondary level. She has also served for two years in a dual appointment in counseling and teaching psychology at San Antonio College in San Antonio. She has also worked as teaching assistant at the Research and Development Center for Teacher Education at The University of Texas at Austin.

EXTENSION LIBRARIAN JOINS REGIONAL PROGRAM

Professional assistance to small hospital and clinic libraries in North Texas and the rest of the five-state Regional Medical Library Program will be provided by Katherine Haas, who has been appointed extension librarian at UTSWMS.

Miss Haas, operating under a \$24,000 RML grant, will conduct workshops on hospital library management and work with individual library staffs in developing resources and ironing out problems. A native Chicagoan, she is an honor graduate of Rosary College's Graduate School of Library Science in River Forest, Ill., and holds a B.S. degree from the University of Wisconsin. She also is a graduate of the University of Tennessee Postgraduate Training Program for Science Librarians.

"This is a badly needed service for small medical institutions that are without professional librarians," Dr. Donald Hendricks, director of UTSWMS' libraries, said. "We're fortunate to have gained the talents of Kay Haas to implement this important program."

GIESECKE APPOINTED CHAIRMAN

Dr. Adolph H. Giesecke, professor of anesthesiology at UTSWMS, has been appointed as chairman of the American Pharmaceutical Association drug interactions project's subpanel on anesthetics.

Subpanel chairmen are responsible for overseeing the general quality and accuracy of drug interaction monographs and chapters prepared by members of their respective subpanels, as well as arbitrating differences of opinion during review and evaluation activities.

BRIDGES NOW IN BUSINESS OFFICE; ADAMS ELEVATES; EVANS JOINS STAFF

M.O. Bridges has assumed the position of assistant business manager as of July 1, according to Julius E. Weeks, Associate Dean for Business Affairs.

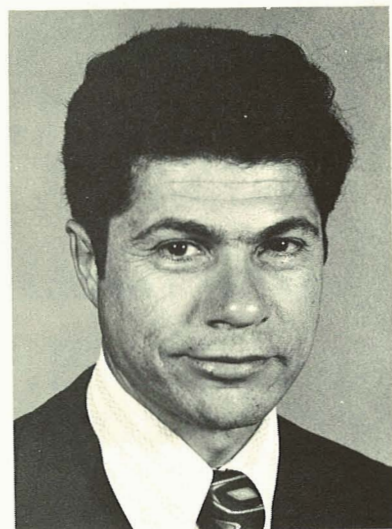
Bridges joined UTSWMS in April, 1966 as purchasing agent. He was formerly with the medical branch at Galveston. He can be located in B-322 at Ext. 2251.---Elevated to purchasing agent at that time was Ray Adams, former assistant purchasing agent. Adams has been with the medical school five years in that capacity. ---Patrick Evans joined the purchasing staff Aug. 1 as assistant purchasing agent. He has formerly been associated with Sargent-Welch Scientific Company.

DR. PAKES JOINS UTSWMS

Dr. Steven P. Pakes has joined The University of Texas Southwestern Medical School as associate professor of Comparative Medicine and director of the Animal Resources Center.

Actively involved in comparative pathology research, Dr. Pakes was recently elected president-elect of the American College of Laboratory Animal Medicine at the group's annual meeting in August. Laboratory Animal Medicine is a specialty of veterinary medicine and deals with the diagnosis, treatment, and prevention of disease in animals used as subjects in biomedical activities.

Dr. Pakes received his B.S., D.V.M., M.S. and Ph.D. degrees from Ohio State University where he was a member of the graduate faculty and director of the postdoctoral program in laboratory animal medicine. He also served as director of the laboratory animal facility at Children's Hospital in Columbus. He is the author of 21 publications on his research work.



REYNOLDS HEADS PERSONNEL

"I am quite pleased with the reception everyone has given me at UTSWMS. They have all been courteous, kind, and helpful." So says Johnnie Reynolds, new director of personnel at the medical school. Reynolds began duties July 17.

Formerly Director of Personnel at the UT Dental Branch at Houston, Reynolds said that "of course, UTSWMS is a much larger institution than I am accustomed to. Many of the problems here are because of the school's size."

Reynolds, a graduate of Texas Christian University in personnel and labor relations, has also worked for Brown and Root Construction. He served in the U.S. Army during the Korean Conflict.

The Reynolds family--Johnnie, Charlotte, Michael Leroy and Newborn Jason--are in the process of moving to the northern part of Irving. "Coming to the school and moving to the Dallas area are like a homecoming to us. We both went to school in Ft. Worth and have relatives in the North Texas area!" He said the couple hopes to make this their permanent home.



LEARNING DISABILITIES SYMPOSIUM HELD

A small army of doctors, teachers and other professionals focused on the multi-sided mystery of learning disabilities at a major symposium here Sept. 28 and 29.

Some 1,400 specialists from various disciplines concerned with diagnosing and treating children with learning disabilities heard nationally prominent experts discuss medical, educational and behavioral aspects of the problem, during sessions at the Marriott Motor Hotel.

The symposium, first of its kind ever staged in the Dallas area, was sponsored by the Pediatrics Department of UTSWMS, with financial support provided by the Jonsson Foundation of Dallas.

Participants, mostly from the Dallas-North Texas area, included pediatricians, neurologists, educators, psychologists, social workers, speech and hearing pathologists, occupational and physical therapists, nutritionists and nurses. Parents representing state and local learning-disability associations also attended.

Purpose of the interdisciplinary conference, said symposium coordinator Dr. Amy Talbot, "was to bring together people we see as the real experts around the country in the field of learning disabilities."

An estimated 5 to 10 per cent of all school-age children are afflicted by some degree of learning disability, school officials say. The subtle disorders including dyslexia and dysgraphia--difficulty in reading and writing, respectively--were largely unrecognized until recent years and have become subject of increasing concern and study.

ANN HARRELL JOINS MEDICAL INFORMATION

Ann Harrell has joined the staff of the Office of Medical Information as of July 1.

An information specialist at UTSWMS, Ms. Harrell has been public relations director for the Dallas YMCA for the past four years. Prior work experiences have included newspaper work, free lance writing, college public relations, and teaching, both in the public school system and in college.

A graduate of The University of Texas at Austin, Ms. Harrell was awarded a bachelor of journalism degree in 1958. She has done graduate work at the University of Tulsa in English literature and education.

*The University of Texas
Southwestern Medical School
is an Equal Opportunity Employer*

