

THE KOHA EXPERIENCE: AN ACADEMIC LIBRARY PERSPECTIVE

Jon Crossno, Cataloging & Metadata Librarian

Cameron Kainerstorfer, Manager, Digital Collections

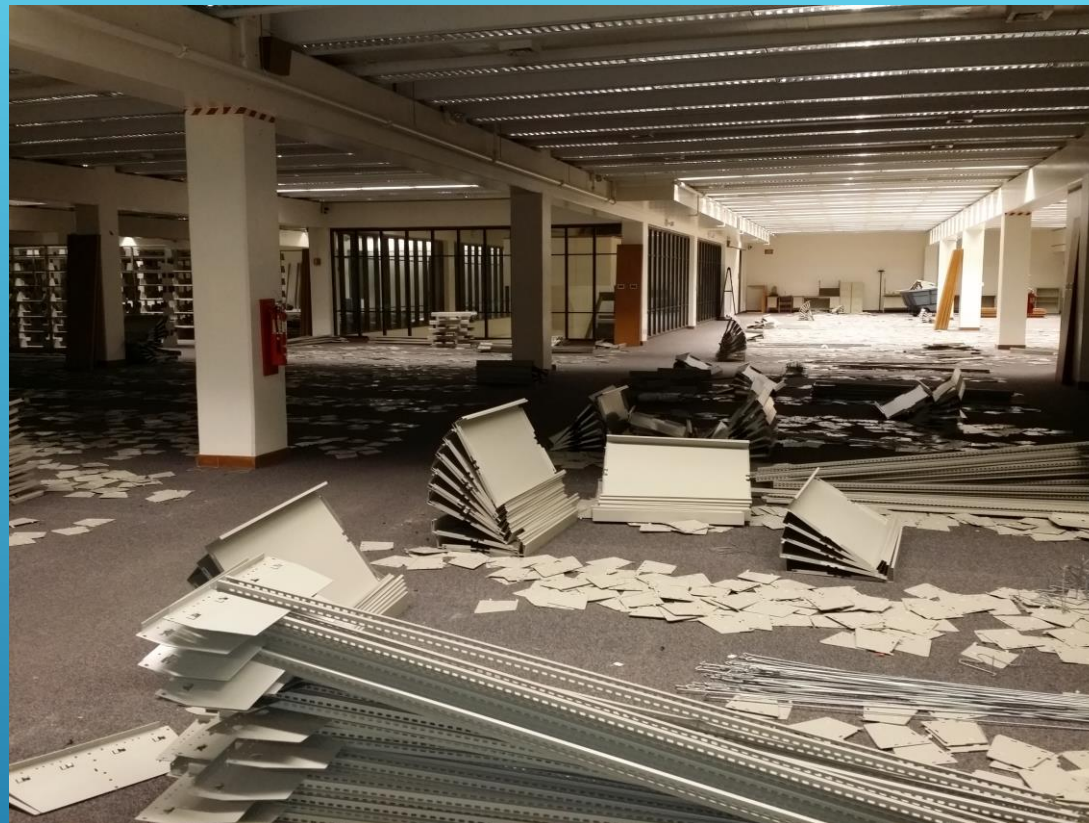
**Health Sciences Digital Library & Learning Center
University of Texas Southwestern Medical Center
Dallas, Texas**

- ▶ 30 full-time employees, including 5 cataloging staff
- ▶ 260,000+ physical volumes in various formats
- ▶ 8,800+ circulations
- ▶ 12,600+ in-house uses

LIBRARY STATISTICS (PRE-MIGRATION)

- ▶ 1993—began using SirsiDynix
- ▶ Fall 2013—catalog replacements reviewed by library group
 - ▶ Atrium
 - ▶ Koha
 - ▶ WMS with WorldCat Local
- ▶ January 2014—Koha selected as catalog replacement
- ▶ July 2014—Staff training from ByWater
- ▶ July 2014—Academic reserve cleanup & transfer
- ▶ August 2014—New Koha catalog launched

TIMELINE



REAL LIFE INTRUDES

- ▶ 2013 and beyond—Stacks removal project
 - ▶ Separate DB created from catalog data for this project
 - ▶ Summer 2013—Weeding “test drive” (8,000 items)
 - ▶ August 2013—library card registrations stopped
 - ▶ April 2014—journal and monograph spaces repurposed
 - ▶ April 2014—MARC records sent to Joint Storage Facility (JLF)
 - ▶ *August 2014—Koha catalog launched*
 - ▶ August 2015—History of medicine content reduced
 - ▶ December 2016—More “resource in common” items claimed at JLF

TIMELINE, CONTINUED

▶ Alternative ILS Search Project—REQUIRED COMPONENTS

- ▶ Meets financial guidelines
- ▶ Provides inventory control
- ▶ Manages all formats (including print, databases, ebooks, & digitized archived items)
- ▶ Intuitive search interface
- ▶ Reporting
- ▶ Support
- ▶ Interoperability with ILLiad*
- ▶ Web-based interface for clients

TO KOHA OR NOT TO KOHA...COMPONENTS

▶ Alternative ILS Search Project—OPTIONAL COMPONENTS

- ▶ Web-based interface for staff
- ▶ Faceted browsing (results sorting based upon filters)
- ▶ Vendor-hosted solution
- ▶ Circulation*
- ▶ Search analytics
- ▶ Social Networking
- ▶ Client database*
- ▶ Interoperability with LDAP authentication

TO KOHA OR NOT TO KOHA...COMPONENTS

- ▶ ByWater Solutions demos (OPAC and staff interfaces)
- ▶ [Bernard Becker Medical Library Catalog](#)
- ▶ [UT Tyler Robert Muntz Library Catalog](#)

TO KOHA OR NOT TO KOHA...HELPFUL SITES


SirsiDynix (local server)

- ▶ Proprietary system
- ▶ Almost no access to database schema
- ▶ Hardware issues—UNIX box with no support going forward
- ▶ System updates/upgrades out of sync
- ▶ Difficult to maintain and update bibliographic data using reports:
 - ▶ Retrieve data
 - ▶ Make changes
 - ▶ Verify changes

Koha (hosted by ByWater)

- ▶ Open source
- ▶ Full access to database schema
- ▶ Updates/upgrades regularly scheduled
- ▶ Easy to maintain and update bibliographic data:
 - ▶ Unlimited customizable reports
 - ▶ Simple tools to make and verify changes

PRODUCT COMPARISON



SOUTHWESTERN

MEDICAL CENTER

LIBRARY

User ID/Barcode:

PIN:

Login to the e-Library OPAC

Library Catalog

[Search/Home](#)
[Library Services](#)
[Academic Reserves](#)
[My Account](#)
[RENEW](#)
[FAQ](#)
[Contact Us](#)
[Go Back](#)
[Help](#)
[New Search](#)
[Change Display](#)
[Kept](#)
[Logout](#)

record 1 of 1 for search title "selected recollections of the university"

Change Display

Continue search in

Google

Item Details

☐ Keep
 [Nearby items on shelf](#)

[Item Information](#)
[A Look Inside](#)
[Catalog Record](#)

Title

Selected recollections of the University of Texas, Southwestern Medical School, Dallas, Texas

Author

Race, George J.

Publisher:

[s.n.],

Pub date:

1997.

Pages:

120 p. :

Item info:

4 copies available at South Campus Library.
1 reserve copy available at South Campus Library.

Holdings

South Campus Library	Copies	Material	Location
WZ 70 AT4 S464 1997	3	Noncirc book	Archives
	1	Book	Top Floor
	1	Reference book	Academic Reserve

[Go Back](#)
[Help](#)
[New Search](#)
[Change Display](#)
[Kept](#)
[Logout](#)

SIRSI DYNIX

Cart

Lists

UTSouthwestern
Medical Center

Health Sciences Digital Library
and Learning Center

Catalog Home

Library Home

Interlibrary Loan

Quick Links

Portals

Services

About

Ask Us

Search

Library catalog

All libraries

Go

Advanced Search | Course Reserves | Library Catalog FAQ

Home

Details for: Selected recollections of the University of Texas, Southwestern Medical School, Dallas, Texas /

Normal view

MARC view

ISBD view

Selected recollections of the University of Texas, Southwestern Medical School, Dallas, Texas / compiled by George J. Race.

By: Race, George J.

Contributor(s): Race, George J.

Material type: Book

Publisher: [Dallas, Tx.] : [s.n.], 1997

Description: 120 p. : ill. ; 28 cm.

Subject(s): History of Medicine -- personal narratives

List(s) this item appears in: Books on the History of UT Southwestern

Print

Add to your cart

Save record

More searches

Share

Facebook

LinkedIn

Google

Twitter

Holdings (5)

Title notes

Item type	Current location	Call number	Copy number
Book	Main Archives Annex (E2.222)	WZ 70 AT4 S464 1997 (Browse shelf)	1
Book	Main Archives Annex (E2.222)	WZ 70 AT4 S464 1997 (Browse shelf)	2
Book	Main Archives Annex (E2.222)	WZ 70 AT4 S464 1997 (Browse shelf)	3
Book	Main Archives Annex (E2.222)	WZ 70 AT4 S464 1997 (Browse shelf)	4
Book	Main Archives Annex (E2.222)	WZ 70 AT4 S464 1997 (Browse shelf)	5

KOHA

- ▶ Transition to digital library
 - ▶ Most print materials transferred to off-site location
 - ▶ Many print materials removed completely
- ▶ Closing of patron database
- ▶ Staff reductions and/or role changes
 - ▶ Limited library staff
 - ▶ Greater reliance on ByWater Support for assistance

CHALLENGES DURING MIGRATION

- ▶ 80,000 bibliographic records
 - ▶ 10,000 bibliographic records for items remaining “in-house”
 - ▶ 70,000 bibliographic records for items transferred off-site
- ▶ Location & item type changes
- ▶ Journal holdings notes
- ▶ OPAC customizations
- ▶ Library staff education
- ▶ Patron education

MIGRATION EXPERIENCE

- ▶ Reporting is so much easier
- ▶ Cataloging functions are streamlined
 - ▶ MARC imports
 - ▶ Batch item deletion/modification
 - ▶ Greater reliance on up-to-date records for ebooks & ejournals in the catalog
 - ▶ Ability to feature content not owned or managed by the library (President's Lecture Series videos in Vimeo; ACE/Skillsoft/Books24x7 professional development resources through another department)

WHAT WORKS WELL?

- ▶ “Cart” causes staff/patron confusion
- ▶ Web interface customization requests from staff
- ▶ Interlibrary loan connections...or the lack of them

WHAT DOESN'T WORK WELL?

- ▶ Use of Google Analytics to identify marketing that works
- ▶ Banner updates for catalog to tie in with marketing efforts
- ▶ More active use of lists to highlight themed e-collections
- ▶ OCLC and HathiTrust inclusion

FUTURE PLANS

- ▶ Identify trends in your library and how they affect what you need from the catalog
- ▶ Extreme weeding—not yet an Olympic sport, but it should be
- ▶ Review your location descriptions
 - ▶ Some may be due to previous system limitations
 - ▶ Migration is a good opportunity for change

MIGRATION TIPS

Jon Crossno
jon.crossno@utsouthwestern.edu

Cameron Kainerstorfer
cameron.kainerstorfer@utsouthwestern.edu

[UT Southwestern Health Sciences Digital Library and Learning Center—Koha catalog](#)

QUESTIONS?

Several white lines of varying lengths and slopes are positioned in the bottom right corner of the slide, creating a modern, abstract graphic element.